


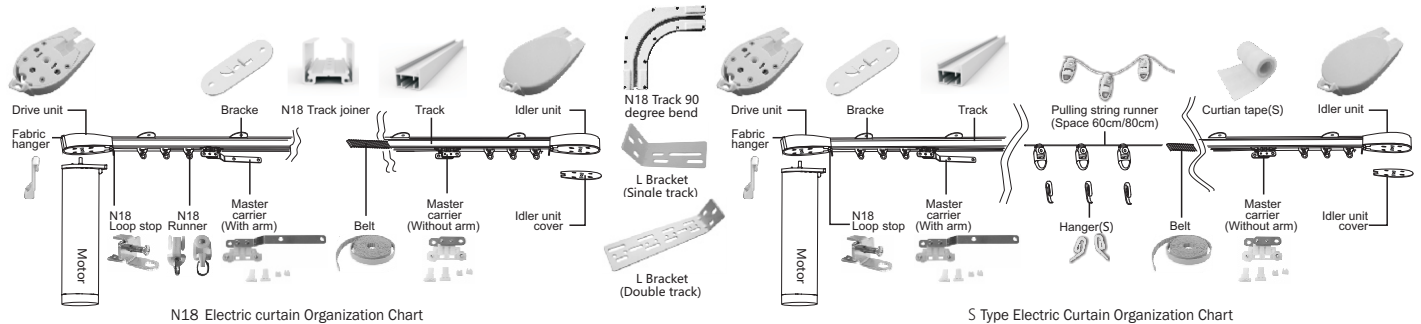
B Bearing Capacity Parameter Table

Units: (Kg) Remark: Double  Single 
Here by we recommend the formula to calculate the fabric weight as follows: fabric weight=fabric weight Kg/ m² x fabric area covered m² x wrinkles rate.

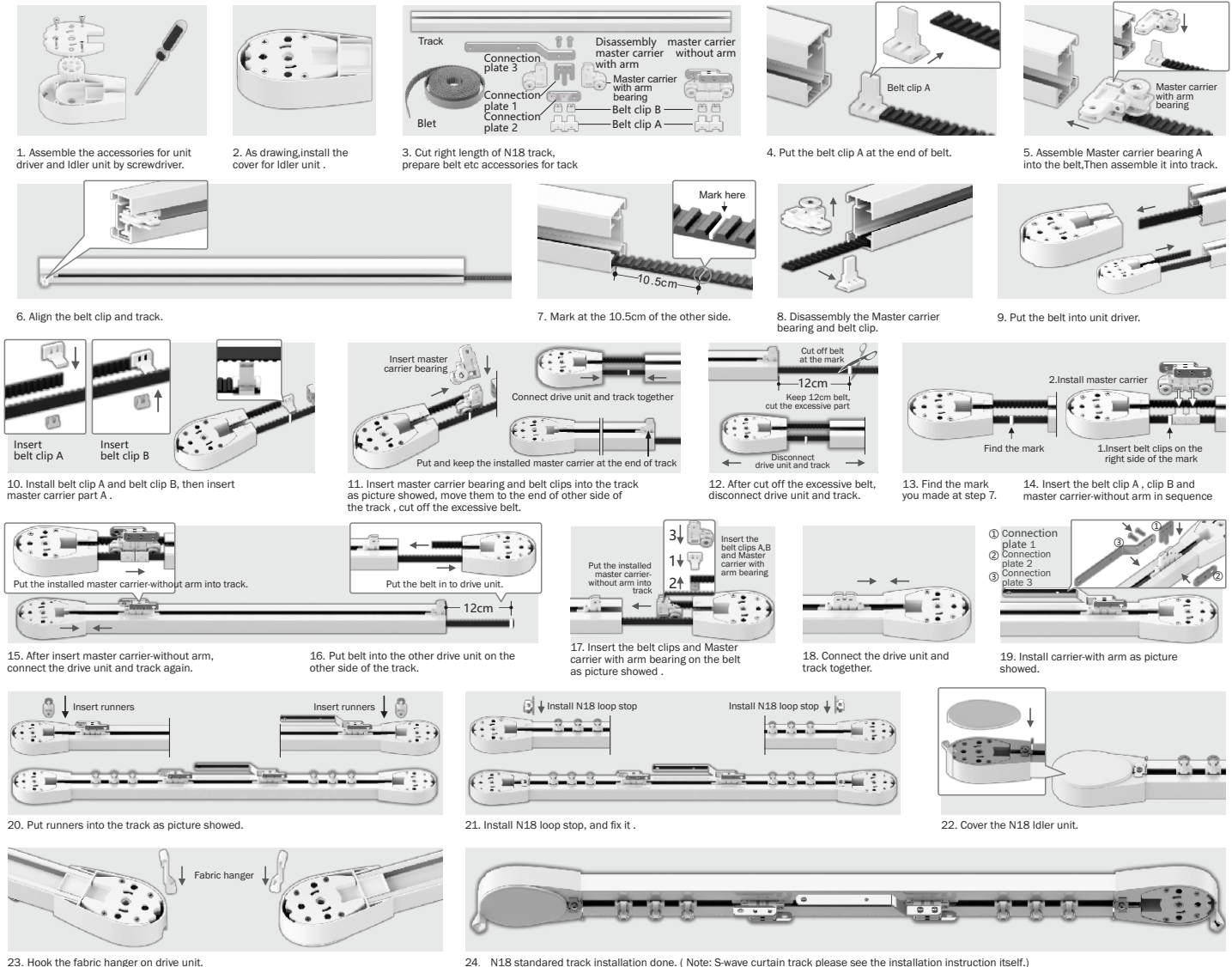
2N m single motor	Track style		Loading weight		Fabric length		Track style		Loading weight		Fabric length	
	Track style		Loading weight		Fabric length		Track style		Loading weight		Fabric length	
	Track style		Loading weight		Fabric length		Track style		Loading weight		Fabric length	
	Track style		Loading weight		Fabric length		Track style		Loading weight		Fabric length	
	4m	60	50	45	40	35	30	31	21	16		
	8m	55	45	40	35	30	25	21	16			
	12m	50	40	35	30	25	20	—	—			

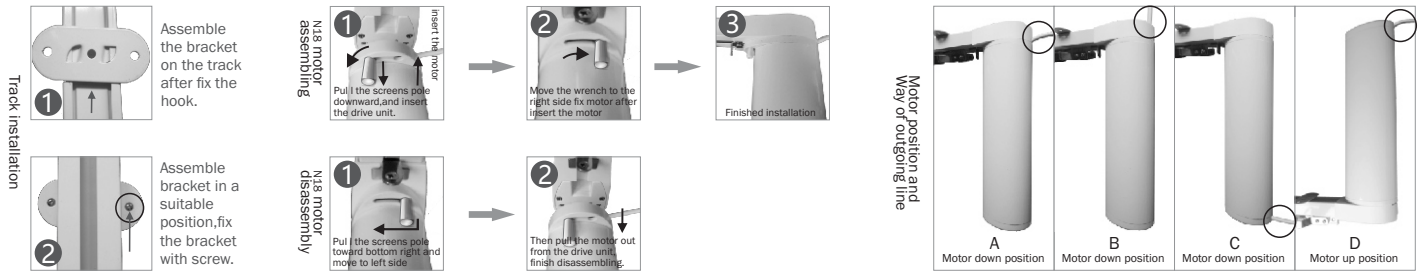
Description: 1. The chart shows the maximum load bearing of 2N. m single motor with different track settings (length/opening way, etc.).
When calculating the maximum load bearing, the fabric wrinkle rate should also be taken into account.
2. In the chart, the maximum load bearing does not consider the friction between fabric and track or curtain box.

C Curtain Motor Structural Drawing

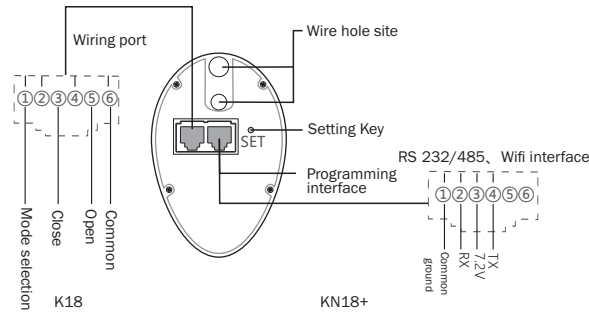


T The track system the assembly instruction



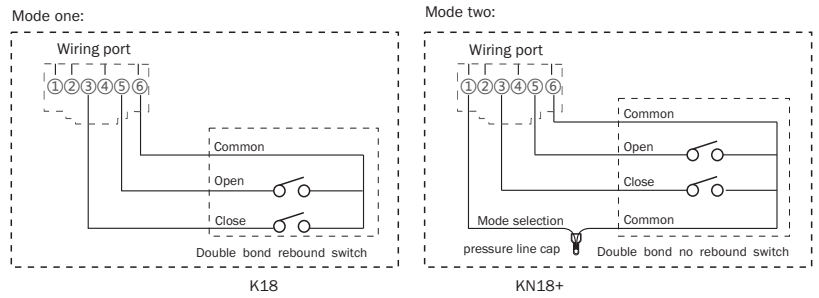


T Terminal switch wiring method



L Low voltage mode selection

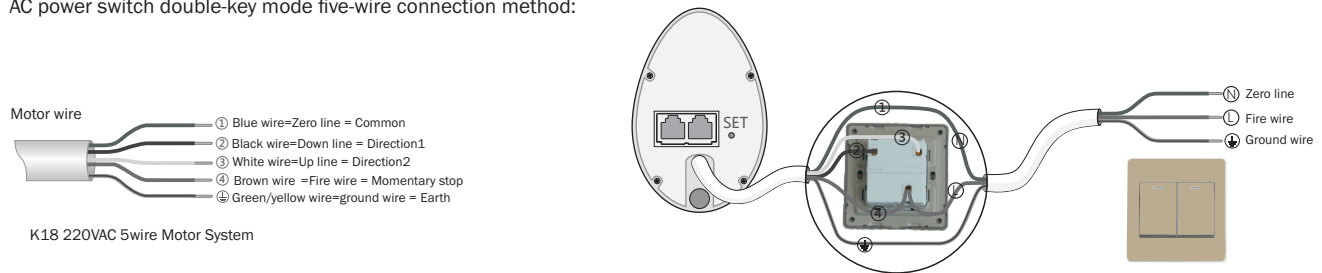
⚠ The default is the first switch.



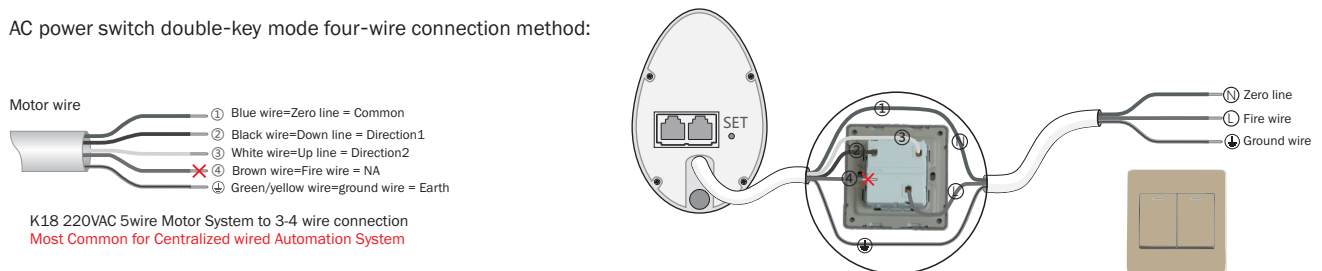
A AC power switch installation wiring diagram

- ⚠ 1 Strong current control distance more than 60m, the need for special custom.
- 2 Zero line and Fire wire can not be reversed. If there is a spare line after wiring, please use pressure line cap to do well insulation.

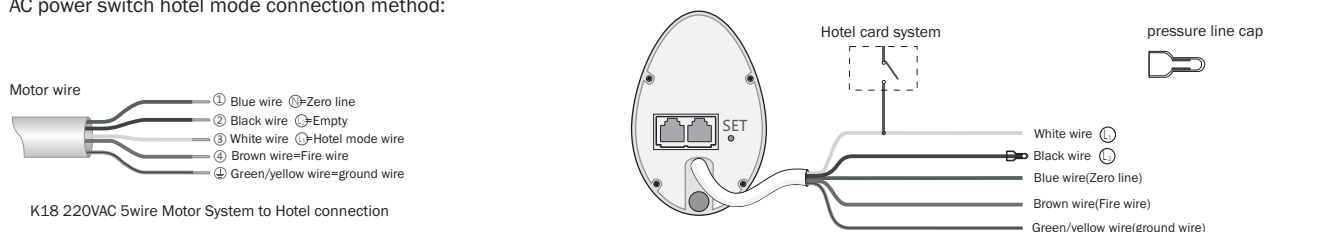
AC power switch double-key mode five-wire connection method:



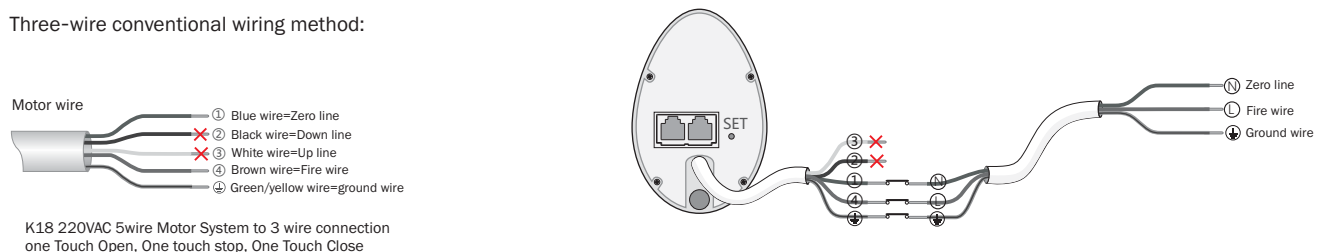
AC power switch double-key mode four-wire connection method:



AC power switch hotel mode connection method:



Three-wire conventional wiring method:

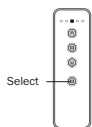


Open the motor cover:

Open the motor cover before you operate



Open the motor cover

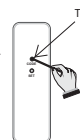


1. Select the channel that will be paired ;



Motor response:
rotate back and forth once.

2. Press 【 Set 】 button on motor ;



Tool with 1.5 mm diameter or less
Motor response:
rotate back and forth once.



3. Within 10s after motor stops, press 【 Code 】 button ;

Delete code: Delete the code with transmitter
Delete all code.



Motor response:
rotate back and forth twice.



Motor response:
rotate back and forth once.



1. Press the 【 Set Key 】 on the motor

2. Loosen the 【 Set Key 】 , press the 【 Set Key 】 again.

Speed setting: Two speed can be adjusted , Default is first :



Motor response:
rotate back and forth three times.

1. Press & Hold 【 Set 】 button on motor about 15s ;



Eliminate limit: N17-4E and 5 wires curtain motor have this features ; Eliminate limit as way 1 or way 2 :

Way 1 :

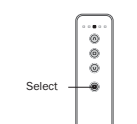


Motor response:
rotate back and forth once.



1. Press 【 Set 】 button on motor ;

Way 2 :



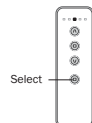
Motor response:
rotate back and forth once.



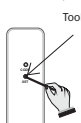
1. Select the channel that will be used to eliminate limits ;

2. Press & Hold 【 Code 】 button on transmitter about 10s

Reset direction : Reset motor direction. Such as: before reset , press transmitter up button , blinds run down. After reset , press transmitter up button , blinds run up.



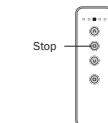
1. Select the channel that will be reset direction ;



Tool with 1.5 mm diameter or less

Motor response:
rotate back and forth once.

2. Press & Hold 【 Set 】 button on transmitter about 10s ;

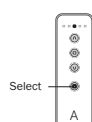


3. Within 10s after motor stops, press 【 Stop 】 button about 5s ;

Motor response:
rotate back and forth once.



Copy: Add a new channel to control motor . (No need to touch motor) :



1. Select the channel that will be copied ;



Tool with 1.5 mm diameter or less

Motor response:
rotate back and forth once.

2. Press & Hold 【 Code 】 button on transmitter about 10s



Tool with 1.5 mm diameter or less

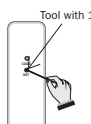
Motor response:
rotate back and forth once.

3. Within 10s after motor stops, pair on the new channel ;



A AC power switch mode selection

⚠ The factory default is the first mode.

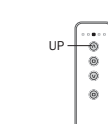


Tool with 1.5 mm diameter or less
Motor response:
rotate back and forth once.

1. Press & Hold 【 Set 】 button on transmitter about 10s ;



2. Press 【 Set 】 button on motor

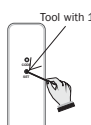


3. Hold & Press 【 UP key 】 about 3s ;

Motor response:
rotate back and forth once.



4. Set successfully
【 AC power double bond no rebound mode】

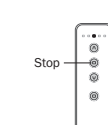


Tool with 1.5 mm diameter or less
Motor response:
rotate back and forth once.

1. Press & Hold 【 Set 】 button on transmitter about 10s ;



2. Press 【 Set 】 button on motor

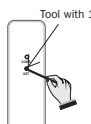


3. Hold & Press 【 Stop key 】 about 3s ;

Motor response:
rotate back and forth once.



4. Set successfully【 Hotel mode 】

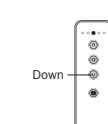


Tool with 1.5 mm diameter or less
Motor response:
rotate back and forth once.

1. Press & Hold 【 Set 】 button on transmitter about 10s ;



2. Press 【 Set 】 button on motor



3. Hold & Press 【 Down key 】 about 3s ;

Motor response:
rotate back and forth once.



4. Set successfully
【 AC power double bond rebound mode】